



CONTACT HMY YACHTS | TWO OCEANS 561-228-4300

Standard Layout

- Open plan main-deck, 4 guest Staterooms, 4 heads, 1 crew cabin with head. Open plan fly bridge.

Principal dimensions

- LWL: 66ft 11 in / 20.40m
- BEAM: 31ft 9 in / 9.67m
- DRAFT (APPROX.): 3ft 9in/1.15m
- DISPLACEMENT - LIGHT SHIP (ESTIMATE): 88 000LBS / 40T
- CERTIFICATION: CE Class A - 10 Passengers
- WATER: US 450 Gal/1700 Liters
- FUEL (APPROX.): US 1000 Gal/ 3785 Liters
- PROPULSION: 2x Cummins QSM 11

Standard Specifications

Manufacturing Materials

- Hulls, decks, and coach roof are constructed from composite with a gel coated outer layer, Vinylester barrier coat for underwater protection and polyester resin combined with a high-performance E-Glass laminate PVC foam core.
- Interior joinery work and floorboards are all cored panels to provide stiffness at low weight. All exterior surfaces are gel coated and or sprayed & painted with gloss coat. Interior and below deck surfaces will be painted with Marine Flo Coat.
- One-piece hull lamination.
- High-density foam cored construction using vacuum bag technology.

Appendages

- Protective Keels Bonded to hulls.
- 2 Composite rudders using high-lift laminar flow foil section mounted with solid 2205 stainless-steel shafts running in Jefa bearings.
- Humphree electrically actuated trim tab on each hull.

Exterior Finish

- The entire above water line exterior of the boat is gel coated/spray-painted, standard colour white with two tone top sides and super structure.
- Walking areas to be non-skid finished, standard colour white, contrasting color option available.

Interior Finish

- The interior will be finished in accordance with client's choice from one of the three available factory options.
- Custom carpentry and high-quality marine hardware.
- All interior flooring is lightweight and durable.
- Headliner detail throughout all interior accommodations.



Standard Layout and Equipment

Saloon

- Access stairs to lower hull cabin areas port and starboard.
- 60" Samsung LED Television on power drop-down with Samsung audio system.
- Custom Aluminum sliding aft door with flush deck transition between aft deck and saloon.
- Wet bar with storage for drinks and glassware.

Galley

- Acrylic counter tops.
- Island with dishwasher and two fridge/freezer drawers.
- FRP modules for galley cupboards and counters.
- 5 burner electric cook top.
- Power ventilation above cooktop.
- Convection microwave oven.
- 30" Refrigerator.
- Built in coffee maker.
- Cutlery and crockery drawers.
- Pot drawer & spice drawers.
- Double sinks with garbage disposal.
- Under counter trash drawer.
- Custom accent wood carpentry.

Dining

- Custom dining table with seating for 8.
- Built in bench seat.
- 6 dining chairs, per client's specification.
- Storage cabinets.

Aft Main Deck

- Seating as per layout.
- (4") thick EZ- Dry foam cockpit cushions covered in Sunbrella.
- Cockpit table with wooden top.
- Storage cabinets and full height locker.
- Cabinet with basin, ice maker and fridge.
- Stairs to Flybridge.
- Engine access hatches.
- Side Access doors.



Foredeck AI Fresco Dining /Lounging

- Custom door opening into Saloon/ Master cabin area.
- U shaped seating - storage within.
- Sun pad with storage below.
- Composite table on fixed base.
- Access to windlass.
- 4" Ez-Dry foam with Sunbrella covering.

Flybridge Helm Station and Seating

- Helm Station with console.
- Two Stidd helm chairs.
- Glass Windscreen with wiper and washer.
- Engine instrument panels, gear shift/throttle control and cruising instruments located within easy reach of the wheel position.
- Plastimo Offshore 115 compasses located at helm position.
- Stainless steel steering wheel.
- Emergency tiller.
- Steering system with power assist.
- Storage lockers.
- Fly bridge wet bar unit with BBQ, sink, fridge, ice maker and four fixed bar stools.
- Storage cabinet, dining table and bench seat as per general arrangement.
- Large oversized cushy seating with deep cushions and backrest and coffee table as per general arrangement.
- Door leading to fwd. sun lounge area with 4" EZ-Dry foam cushions and Sunbrella fabrics with slam coffee table.
- Fresh water outlet to flush tender.
- Steelhead ES1500 crane.
- Removable stainless-steel railing.

Transoms

- Custom aluminum swim ladder on starboard hull.
- Starboard side transom; shower with pressurized fresh water hot and cold.
- Handrails.
- Access to the emergency tiller (Port & Starboard).
- Access doors to storage areas for dive and fishing gear.

Master Stateroom in Starboard Hull

- FRP modules.
- Custom carpentry.
- King size bed, walk around.
- Reading lights and cabin lights.
- Nightstands with light switches and outlets.
- Headliner with recessed led lights.

Master Stateroom in Starboard Hull (Continued)

- Dressing area with full height closets.
- Port lights for ventilation inset into large hull-side windows.
- Deck hatch.
- Blind over large window.
- Master Head on same level as stateroom.
- Tecma/Planus freshwater toilet.
- Separate shower cubicle.
- Double basins.
- Mirror.
- Storage.
- Outlets.

All Guest Cabins

- FRP modules
- Queen beds
- Soft furnishings
- Custom wood accent carpentry
- Pop-up TV
- Reading lights, cabin lights
- Opening port light in hull side
- Deck hatch
- Nightstands with light switches and outlets
- Closet
- Fabric headliner with recessed led lights
- En-suite bathroom with vanity, separate walk-in shower, head, and basin
- Blind over large window
- Tecma/Planus freshwater toilets
- Separate Shower cubicle
- Mirror
- Storage
- Outlets

Technical Equipment

- The mechanical and systems hardware is distributed in the boat so as to concentrate weight as low as possible and to balance the vessel whilst allowing for easy access to hardware for inspection and maintenance. The main engines are in their own dedicated compartments aft between the aftermost bulkhead and the transom.



Engines

- 2 Cummins QSM 11 diesel motors coupled to KMH52V gearboxes, Temmet 25 shafts and fixed propellers with flex couplings.
- Standard electronic engine controls and instrumentation panels at helm console.
- 24v high amp alternators to charge house bank.
- Water locks and exhaust system to keep noise levels as low as possible.
- Dual Racor fuel filters for each motor.
- LED lighting in each engine room.
- Grey paint finish below waterline on the interior of the boat and service areas.
- Sound seal for both engine compartments.
- Main Engine Delta T ventilation system: via remote operated fans and fire shut off system.
- Sea Fire system to both engine room spaces.
- Power assisted hydraulic steering system with emergency override.
- 2x Onan QD29kw 60HZ Generator with sound shield and Underwater Exhaust.

Thrusters

- Bow thruster – drop down.
- Stern Thruster.

Plumbing

- 450-gal water tanks with deck fill and vent, tank level display gauge on electric panel.
- 2 x freshwater pumps with accumulator tanks.
- Plumbing piping and fittings to be John Guest Speedfit®.
- 2 x 80L Vetus black water holding tanks with gauge, buzzer, and visual alarm.
- Black tank pump out for at sea or by deck drain for shore side pumping; breathers to have coal filters.
- Tecma/Planus silent electric freshwater toilets in each hull, as per layouts.
- Fresh water outlet for anchor/deck wash down.
- Cold water outlets at transom – salt and fresh.
- 4 x Rule bilge pumps 1300GPH with mechanical float switches and auto/man alarms.
- 2 x Whale bilge pump Titan BP4410 manual bilge pump; located in cockpit for emergency pumping.

Electric System

- Service voltages: 24 VDC and 110V 60Hz.
- Service Batteries – 400a/h @ 24V capacity.
- Engine Start Batteries – 90a/h capacity, 2 x 12 Volt 90a/h.
- Main electrical distribution panels 12V,24V and 110V.
- One custom made electrical control and display panel.
- All service areas: LED service lights, switched at main panel.
- Mastervolt 3500w inverter charger.
- 100-amp charger only.
- 8x 400w solar panels on Flybridge hard top.
- Mastervolt easy view battery management system.
- 110v plugs in all accommodation spaces, saloon, galley and flybridge.
- USB points in all accommodation spaces.
- Air Conditioning system to all cabins and saloon/galley.
- Retractable shore power lead Glendinning cable master 100A 100ft cable.
- 4x blue underwater lights.

Lighting

- All Lighting LED Marine grade.
- LED lighting to heads and below deck accommodation spaces.
- LED low level lighting in cabins, saloon, cockpit and Flybridge.
- 2 x LED aft deck spotlights.
- Courtesy lights (blue).
- Aft deck transom steps and side deck steps x 1 on each step.
- LED lighting on forward seating/sun pad area.
- LED lights on underside of fly bridge overhang, above side decks.
- Courtesy LED lights on each step on port and starboard hull companionway.
- Service area – Dura LED, white (switched from main panel, 1 switch):
- 2 in each engine room.

Navigation Lights

- All navigation lights LED (port, starboard, anchor and stern).

General

- 1 Seat on each pulpit.
- Handrails on transom coaming and aft cockpit as per General arrangement.
- Stainless steel stanchions 30" high, on outer bulwark.
- Stainless steel guard rails with wire intermediate.
- 9 Alloy mooring cleats - 340mm, 4 port, 4 starboard, 1 at anchor locker.
- 2 260mm cleat at stern.
- Access to storage areas in port and starboard forward hulls through Lewmar or equivalent size 70 deck hatch.
- Splendide 110v washing machine.
- Splendide Dryer 110V.



Anchor Handling

- Anchor windlass; Maxwell, part no. HRC10 non-capstan version; with foot switches on the foredeck and remote switch on flybridge helm.
- Custom self-launching bow roller.
- Self-bailing lockers for self-stowing chain and rope.
- 1 Ø24 mm nylon bridle fitted to stainless pad eyes on inboard hull sides.
- Fresh Water Wash-down.

Ground Tackle

- Primary anchor, Delta Type on 50m (164') of 12mm (1/2") G4 chain and 50m of Rode.

Hull and Deck Ventilation

- All port lights and hatches to have blinds.
- Port lights and hatches for light and ventilation (standard layout).
- Hull Portholes.
- Port Hull Side: Lewmar, Flush Mitre Port light, Size 3, x2.
- Starboard Hull Side: Lewmar, Flush Mitre Port light, Size 3, x2.
- Deck Hatches: Lewmar, Medium profile, Size 60, x6.

Navigation and Instrumentation System

- 3x Garmin Gpsmap 8616 16" chart plotter with GPS antenna
- Garmin Auto pilot with version 2 smart pump
- Garmin 4'open Array GMR Phantom 54 radar:
- 1 kw Airmar B175 Depth transducer
- VHF 215 AIS on Flybridge
- Fusion Sound system with 4 zones, 4 speakers to saloon, 2 to cockpit, 2 to fly bridge, 2 to forward seating.
- 1x Garmin camera in each engine room and 1x camera on aft deck bulkhead with view of cockpit.



Figure 1 Flybridge Layout



Figure 2 Owner's Deck - Interior Layout



Figure 3 Main Deck - Interior Layout

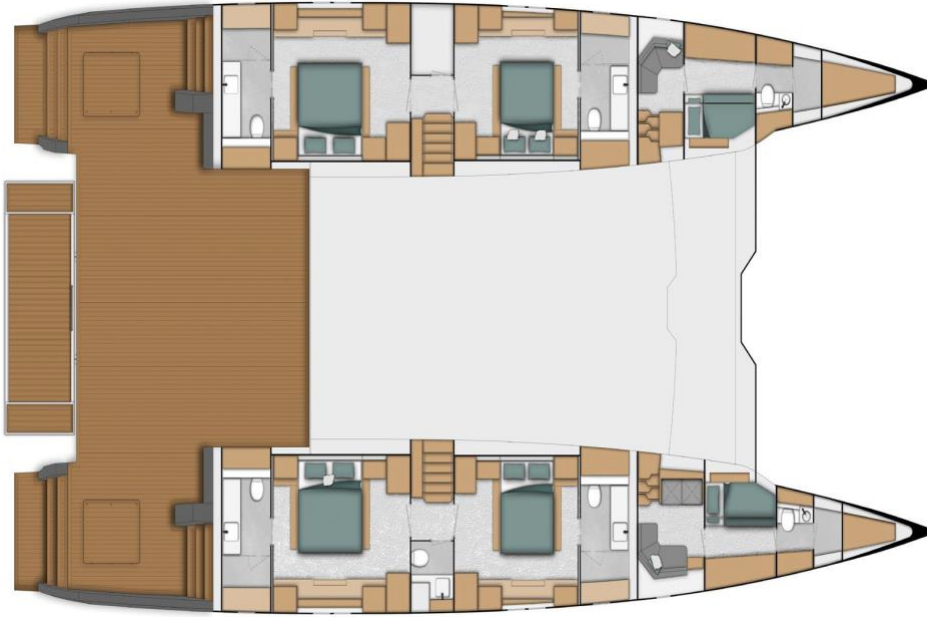


Figure 4 Hulls - Interior Layout

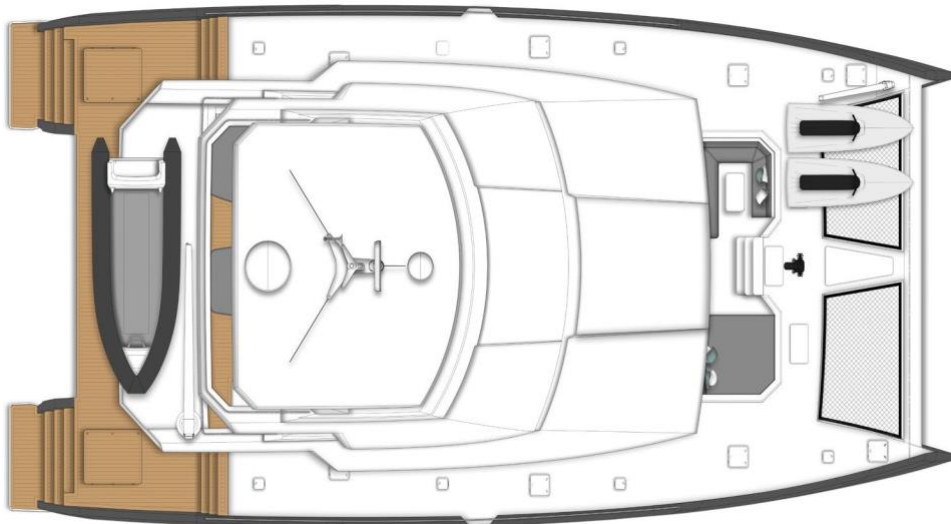


Figure 5 Exterior Layout



Additional Options

Cabin Layout Upgrade Options

- On-deck master cabin, with 4 guest cabins, four bathrooms and accommodation for 3 crew, as per general arrangement.

Optional Flybridge Upgrade

- Air conditioning.
- Enclosed flybridge - interior fit and finish as per main deck and internal spiral stairway to salon/flybridge.

General Optional Upgrades

- Remote motorized SPOTLIGHT on mast.
- Flood lights: Hella Marine 2X Aft deck and 2X Flybridge.
- Additional Transom Ladder and Shower.
- Passarelle 11,5 ft foldable with brackets on each transom.

Optional Davit and Transom Platform

- Tender lift on lower deck with custom platform.

Watermaker Options

- Sea Recovery Aqua Matic.
- Spectra Newport 1000 110V 111lt/Hr watermaker.
- Spectra Newport 400 24V 54lt/Hr watermaker.

Instrument Upgrade Options - all instrument upgrades priced on request

- Yacht controller.
- Prewire for KVH.
- KVH TracVision TV5.
- AIS send and receive.
- sounder module.
- Other instrument requests to be discussed with Sales agent.
- Wind Speed and direction/Barometer.
- Flir Camera.

****All Pricing is FOB Cape Town, South Africa. Shipping, Insurance, and Import Costs are not Included. ****



Buyer Acknowledges the Following

All vessel data provided by Two Oceans Marine Manufacturing is an estimate and not guaranteed. The actual vessels data, weight, performance and draft may vary, depending on construction tolerances, final specification, layout, additional items installed, sea state, vessel load condition while under way, etc. Two Oceans Marine Manufacturing may substitute certain items, should such items not be available, are discontinued or are no longer offered by Two Oceans Marine Manufacturing. Pricing is valid for 30 Days. Prices are fixed on receipt of order and deposit. Deviation from the standard specification, layouts and interior finishes, may be considered at an additional cost. Two Oceans Marine Manufacturing does not warranty any owner supplied and factory fitted items and equipment.

**CONTACT HMY YACHTS | TWO OCEANS
561-228-4300**